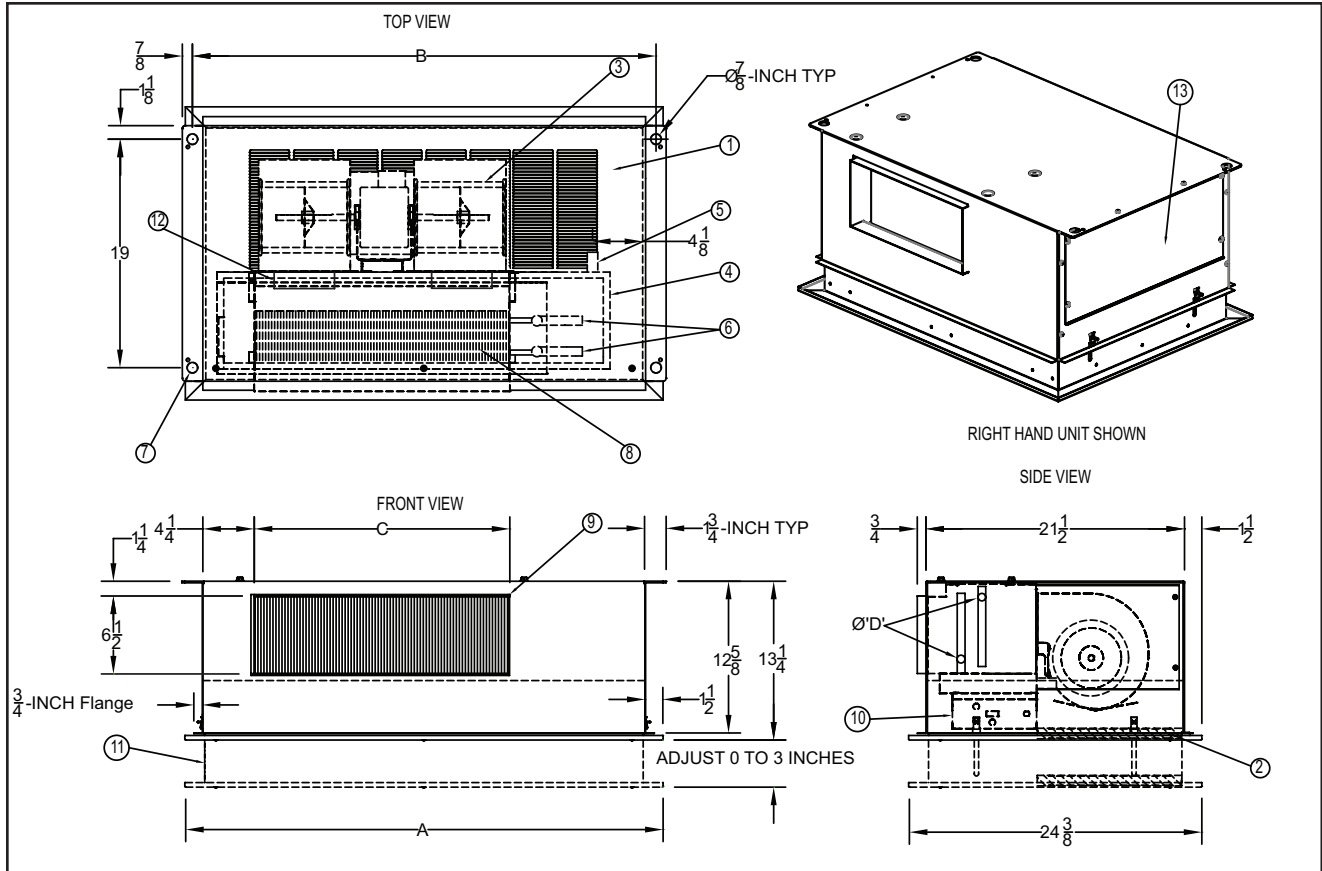


DIMENSIONS

HBR RECESSED CABINET

Redefine your comfort zone™ | www.titus-hvac.com



- | | | |
|----------------------------------------------|------------------------------------|------------------------------------------|
| 1. Access Panel w/ Return Air Stamped Grille | 5. Condensate Connection 3/4" MNPT | 10. Electric Control Panel |
| 2. Filter | 6. Coil Connections (2-Pipe Shown) | 11. Telescopic Return Air / Access Panel |
| 3. Motor/Blower(s) Assembly | 7. Hanging Points | 12. Electric Heaters (optional) |
| 4. Condensate Tray (Double Wall optional) | 8. Coil | 13. Side access panel |
| | 9. Supply Air Flange | |

Model	Dimensions (inches)					Approx. Weight (pounds)
	A	B	C	D	Filter	
HBR02	32 3/4	31 1/2	14 1/4	5/8	24 x 12 x 1	100
HBR03	35 3/4	34 1/2	17 1/4	5/8	28 x 12 x 1	115
HBR04	41 3/4	40 1/2	23 1/4	5/8	28 x 12 x 1	130
HBR06	50 3/4	49 1/2	32 1/4	5/8	42 x 12 x 1	145
HBR08	58 3/4	57 1/2	40 1/4	5/8	50 x 12 x 1	170
HBR10	68 3/4	67 1/2	50 1/4	7/8	(2) 30 x 12 x 1	200
HBR12	78 3/4	77 1/2	60 1/4	7/8	(2) 34 x 12 x 1	225

All dimensions are in inches